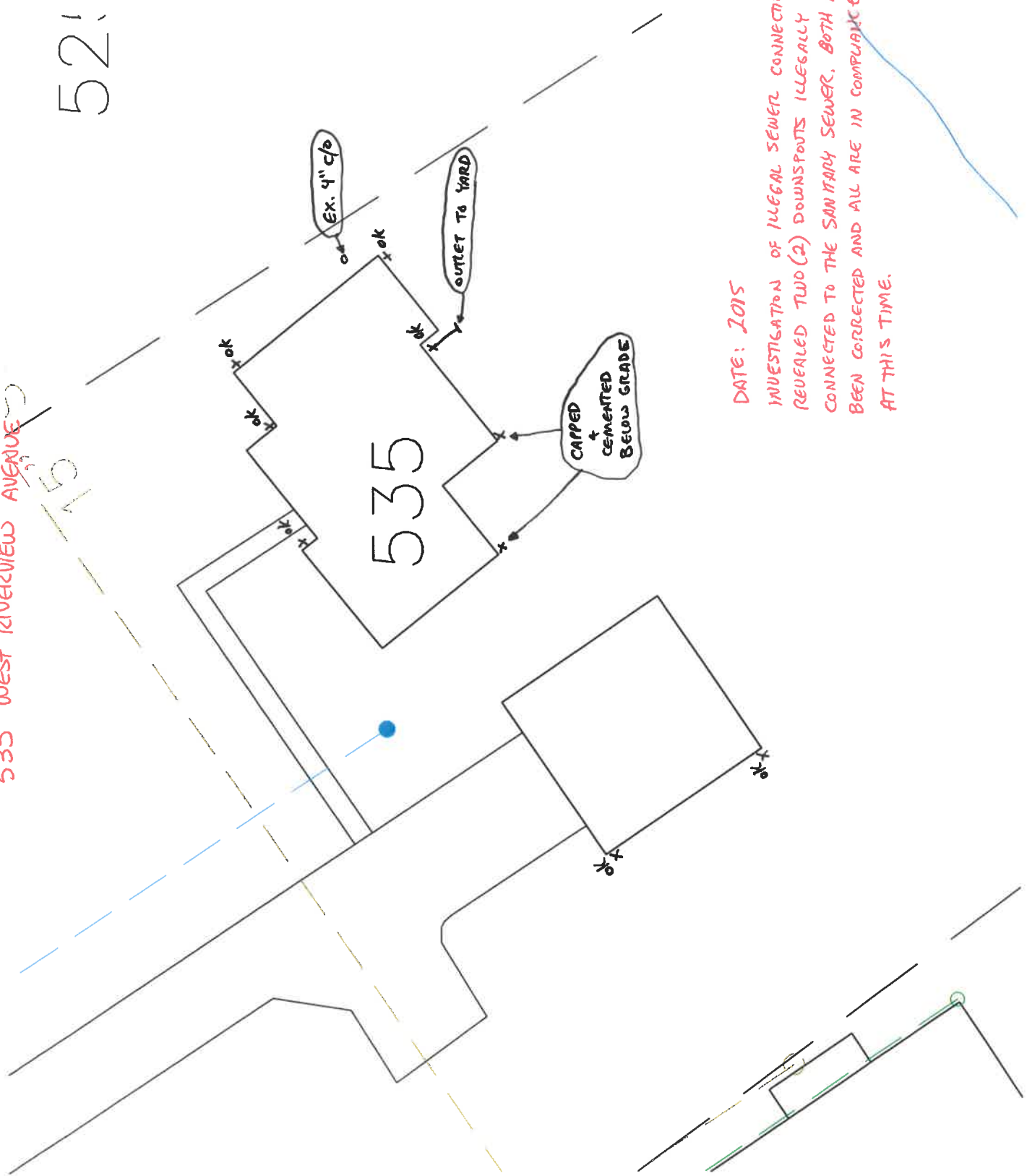


535 WEST RIVERVIEW AVENUE

52!

N
1" = 20'



DATE: 2015
 INVESTIGATION OF ILLEGAL SEWER CONNECTIONS
 REVEALED TWO (2) DOWNSPOUTS ILLEGALLY
 CONNECTED TO THE SANITARY SEWER. BOTH HAVE
 BEEN CORRECTED AND ALL ARE IN COMPLIANCE
 AT THIS TIME.